



PREMIUM QUALITY PRODUCTS EVERY PROJECT CAN AFFORD



PO Box 7423  
Fujairah, UAE  
T: +971 9 2282653  
F: +971 9 2282654  
Website: [www.lignum-composites.com](http://www.lignum-composites.com)  
Email: [info@lignumcomposites.com](mailto:info@lignumcomposites.com)



DECKING | RAILING | FENCING | FASCIA | PERGOLA | OUTDOOR PRODUCTS

## Lignum into Your Great Outdoor Living Space

At Lignum Composites, we supply quality composite building products with the same look and feel as wood, combined with durability and ease-of-maintenance beyond wood. With our commitment to technology and product design, New Insight helps you make your outdoor living dream a reality.



First-Class Composite Building Products

# CONTENTS

## FIRST-CLASS COMPOSITE BUILDING PRODUCTS



About Lignum Composites 4



Composite Decking 6



Composite Fencing 12



Composite Wall Cladding 14



Composite Railing 16



Composite Deck Tile 17



Composite Pergola 18



Outdoor Products 19



Resources 20



### Lignum Composites Products

Lignum composite products are engineered to stand up to harsh weather and resist to mold, mildew and insects. This means you can confidently enjoy your perfect outdoor space with its long-lasting good looks without the hassle to paint or stain your deck.



#### High Performance

- > Stands up to harsh weather and outlives traditional wood products
- > Does not splinter or crack like wood, so it's safe and comfortable underfoot



#### Low Maintenance

- > Easy to install and clean
- > No painting, sealing, or staining needed



#### Long-lasting Beauty

- > Looks and feels like natural wood
- > Various colors and distinctive patterns that match perfectly with your outdoor space



#### Eco-friendly

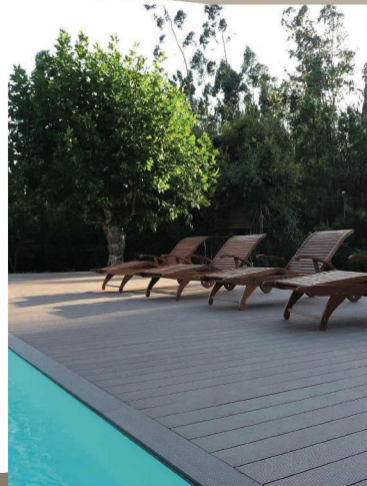
- > Made from 95% recycled wood and plastic
- > Safe to people and environment—no toxic chemicals
- > Protected by our limited warranty for residential applications



### Think Green like You Do

At Lignum, we are saving tens of thousands of tons of plastic and wood from landfills each year. Our products are made almost completely from pre-consumed, recycled materials. Our manufacturing process is also optimized to minimize the impact on our environment. We think green because we know it is what you would do.

Lignum is certified to comply with ISO14001:2004 environmental management standards, and we are on  certified manufacturer of wood composite products.





Our business was built on inspiration of bringing ideal balance of look and performance to every project. At Lignum Composites, we make sure every product is designed, produced and QC checked to suit your specific need whether it is for landscaping, industrial, playgrounds, beach fronts, swimming pool, Marina, shopping malls or for individual needs.

Our team consists of designers, engineers and professional installation teams which will accommodate all your requirements. Our goal at lignum is to always be the pioneers at the industry and always deliver the innovation we promised while still delivering the premium quality products that everybody can afford.

We want you to think of Lignum not just as a Supplier, but a creative partner in making your dreams a reality, while leaning on our years of industry-leading design and construction expertise. Since composites are our specialty, we help you create solutions to everything you want and need your project to be.



At LIGNUM, we strive to provide superior products in services that accommodate your needs.



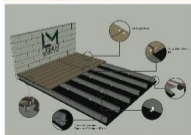
### Reliable Design

Nothing is more rewarding than helping developers to create a "Dream Design". The ideal deck should fit the aesthetic style and structure of a project, as well as the preferences, personality, and needs of the owner. It should be constructed with easy-to-maintain materials, and allow use year-round, whenever possible. And of course, it should be built to the highest of standards for years of worry-free use.



### Supply

Our products supplied on pallets, boxes and we will make sure it is securely strapped, shrink wrapped and edge protected that no harm can be done on them during the shipping or delivery to your warehouse.



### Installation

Lignum skilled team provide comprehensive installation services for your project. Whether its your Marina, backyard, living room, 5 star Hotel interior, our team will make sure your installed product will last for many years as does our after sales support to the owner.

That means we don't just build your deck; we custom design it as per your requirements. Depending on the project, you can get 3D renderings and high quality drawings to help visualize your deck. From the simplest landing to the most complex projects, Lignum will honor the trust you place in us with a project you will love —a deck that provides decades of enjoyment. Contact us to get more information.

Lignum Composite Decking is a more enduring and eco-friendly alternative to wood decking. With Lignum Composite Decking, there's no need to choose between function and style. Just spend your time relaxing on your deck, and experience all the charm of natural wood with just a fraction of the upkeep.



#### High Performance

- > Stands up to harsh weather
- > Does not warp, splinter or rot like wood
- > Resists mold, mildew and termites



#### Beauty with Low Maintenance

- > Various colors and patterns that match perfectly with your outdoor space
- > No painting or staining needed
- > Installs easily and quickly—ideal for DIYers



#### Green and Protected

- > Made from over 95% recycled material
- > Protected by limited residential warranty



### Private Marina Middle east

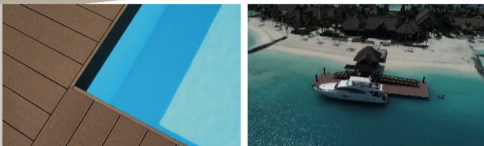
Lignum's composite decking products were chosen for the Private Marina in Middle east Project.



Marina Decking at Waldrof Maldives

### Traditional Composite Decking

Enjoy durable, low maintenance, and eco-friendly composite decking with long-lasting beauty at an incredible value.



**Solid Deck Board**  
138 x 23 mm (5.5 x 0.9 in)



**Hollow Deck Board**  
138 x 23 mm (5.5 x 0.9 in)



**Start Board**  
138 x 23 mm (5.5 x 0.9 in)



**Fascia Board**  
138 x 15 mm (5.5 x 0.6 in)



**Fascia Board**  
180 x 15 mm (7.1 x 0.6 in)



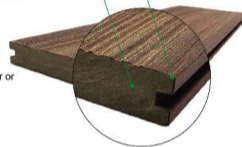
### Capped Composite Decking

Composite decking wrapped in a high-performance shell which provides additional strength and better resists stains, scratches, and fading.

- > More resistant to scratch and stain
- > More resistant to fading (UV resistant)
- > Easier to clean and maintain
- > Performs better and lasts longer than timber or traditional composite decking
- > Backed by limited residential warranty

Composite Core

High-Performance Shield



**Solid Deck Board**  
138 x 23 mm (5.5 x 0.9 in)



**Hollow Deck Board**  
138 x 23 mm (5.5 x 0.9 in)



**Start Board**  
138 x 23 mm (5.5 x 0.9 in)



**Fascia Board**  
138 x 15 mm (5.5 x 0.6 in)



**Fascia Board**  
180 x 15 mm (7.1 x 0.6 in)

## Color Palette

Standard Colors

Traditional Composite Colors



Other custom product profiles, colors and finishing options available. Please ask our sales representatives for more information about available products.

## Surface Finishing



## Decking Accessories



**Deck Fastener**  
Material: HDPE/ALUMINUM  
Fastens deck boards to the joist and provides consistent spacing.



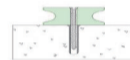
**Start Clip**  
Material: Stainless Steel  
Fastens the starting deck board and provides a neat finish.



**Locking Fastener**  
Material: Stainless Steel  
Locks the board to the joist and controls the direction of expansion/contraction and eliminates potential warping caused by board movement.



**Deck Joist**  
25 mm x 40 mm (1.0 in x 1.6 in)  
Material: WPC  
Joist made with durable composite material that lasts - as long as your composite deck.



Lignum composite decking system includes decking boards, deck joists, fasteners, clips and screws, it is easy to be installed.



1. Install the joist
2. Fasten the first board with start clip
3. Deck boards using deck fasteners
4. Install one by one
5. Cover the sides with fascia boards
6. Finish



## Frame your outdoor space and add beauty and privacy with Lignum Composites Fencing.

### High Performance

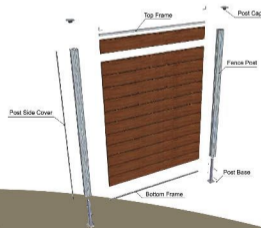
- > Stand up to tough weather
- > More resistant to the elements than wood
- > Resists to rotting, mold and termites

### Beauty with Low Maintenance

- > Long-lasting good looks without painting or staining
- > Available in a variety of colors and styles
- > Installs easily and quickly
- > Virtually maintenance-free

### Green and Protected

- > Contains over 80% recycled material which keeps your fence green
- > Protected by limited residential warranty



Fence section standard size: 1.8 m x 1.8 m (6 ft x 6 ft)

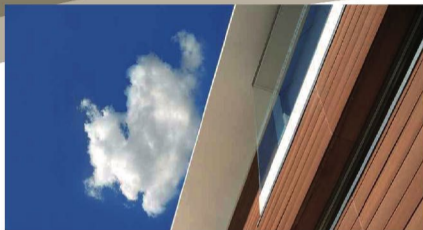
The set includes:

Fence boards, posts, post base, top frame, bottom frame, post caps, post side cover, connect clip, and other accessories.

**Fence Board**  
20.8 mm x 161.5 mm (0.8 in x 6.4 in)  
colors: standard colors





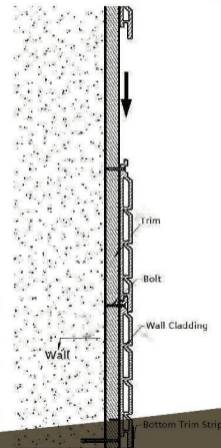


Lignum Composite Wall Cladding is the perfect choice for decorative exterior wall cladding. It is engineered to provide the natural look of wood and withstand what Mother Nature throws at it. Various colors and patterns are available to match your style and help you create the sophisticated look which stands the test of time.

- > Ideal balance of look and strength—tough-as-nail with the look and feel of natural wood
- > Made with composite material which does not warp, crack or rot like wood
- > Improves the thermal insulation of the wall and preserves energy
- > Saves time and labor costs with easy installation and ultra-low maintenance

## Lignum Composite Wall Cladding

DESCRIPTION	
<b>Wall Cladding Panel</b> 20 mm x 245 mm (0.8 in x 9.6 in)	
<b>Wall Cladding Panel</b> 21.5 mm x 173 mm (0.8 in x 6.8 in)	
<b>Railing Accessories</b>	
<b>Bolt</b> Material: Steel	
<b>Bottom Trim Strip</b> Material: Aluminium	
<b>Top Trim Strip</b> Material: Aluminium	





Lignum Composite Railing is the excellent companion for your outdoor space, whether it is your secluded deck or beautiful backyard pool. It offers the ideal balance of look and performance, and improves the views beyond your space.

### High Performance

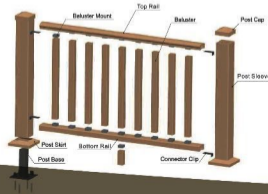
- > Stands firm with sturdy design
- > Does not warp, splinter or rot like wood
- > Resistant to rotting, decay and infestation

### Beauty with Low Maintenance

- > Engineered to retain the real look and feel of wood
- > Various colors and styles available to fit your outdoor space
- > Easy to install and clean

### Green and Protected

- > Contains over 90% of recycled material and no toxic chemicals
- > Backed by limited residential warranty



Complete DIY solutions for your patio, balcony, bathroom, home offices, and so on

- > Made with quality composite material, which resists to cracking, rotting, and insects
- > Various colors and patterns to match your distinctive style
- > With flexible and DIY-friendly interlocking system, the deck tiles can be installed easily and quickly

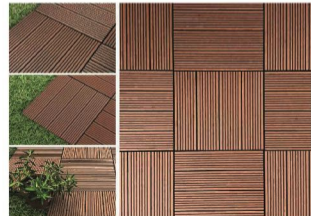


### Specifications:

Size: 12 in x 12 in (305mm x 305mm)  
Colors: Standard traditional composite colors



**Flexible locking system** allows you to lock tiles from any side, and create your distinctive pattern.





A stylish and modern composite pergola would greatly complement your outdoor living space, offering you a comfortable, shady space to relax. Easy installation makes it easy to Do It Yourself.

**High Performance**

- > Engineered to withstand harsh weather
- > Resists to cracking, rotting, mold, and insects

**Beauty with Low Maintenance**

- > Natural beauty with elegant design
- > Available in deep and rich colors that match your outdoor space
- > Low maintenance with no painting or staining needed
- > Made from recycled, non-toxic, and eco-friendly material



**Lignum Pergola**

**DESCRIPTION**

**Pergola Cross Beam**  
80 mm x 200 mm (3.1 in x 7.9 in)



**Pergola Post Sleeve**  
200 mm x 200 mm (7.9 in x 7.9 in)



**Pergola Cross Beam**  
60 mm x 160 mm (2.4 in x 6.3 in)



**Pergola Post Sleeve**  
150 mm x 150 mm (5.9 in x 5.9 in)



Lignum composite outdoor products are durable, eco-friendly, and ultra low-maintenance. They are ideal for parks, shopping centers, work places, and city centers, and help you create a beautiful public space.

**Products**

- Bench
- Plant Box
- Trash Can
- And more

**High Performance**

- > Durable and comfortable
- > Resistant to most extreme weather, including rain, sun and snow
- > Less prone to stain, fade or scratch

**Beauty with Low Maintenance**

- > Solid appearance and long-lasting good looks
- > No painting or staining necessary
- > Stylish and easy to assemble



### Custom Product Solutions

At Lignum, our experienced sales professionals and engineers are happy to assist you with product designs that are tailored to your needs.

Product profile, color, and length are all customizable; Finishing and packaging can be done your way, too.

Contact our sales team to know more about our capabilities.



Your Idea



Design



Manufacture



Package



Deliver

